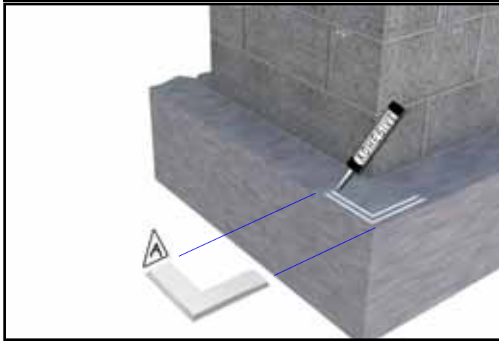



(800) 664-6638

1

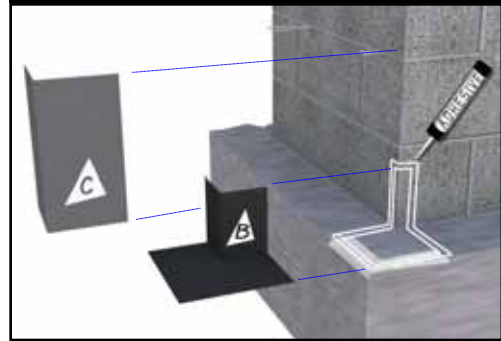
STEP ONE





APPLY SEALANT / ADHESIVE TO PREFABRICATED STAINLESS STEEL CORNER  USING 2 BEADS OF ADHESIVE.

2

STEP TWO

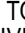


INSTALL PRE-FORMED CORNER BOOT  USING 2 BEADS OF ADHESIVE. APPLY PEEL & STICK LEGGING  OVER PRE FORMED CORNER BOOT.

3

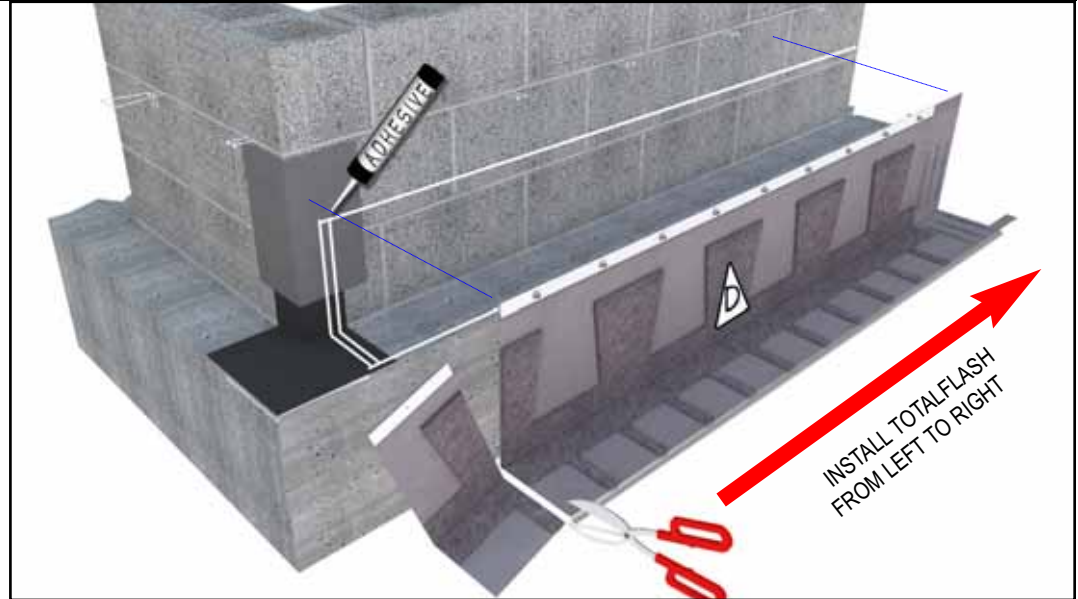
STEP THREE

TRIM 6" LAP SECTION FROM LEFT SIDE OF FIRST SECTION OF TOTAL FLASH.

INSTALL TOTALFLASH  ADJACENT TO CORNER DRIP USING ADHESIVE APPLIED HORIZONTALLY BEHIND TERMINATION BAR AND DRIP EDGE & VERTICALLY AT ENDS OF TOTALFLASH PANEL AS SHOWN TO THE RIGHT

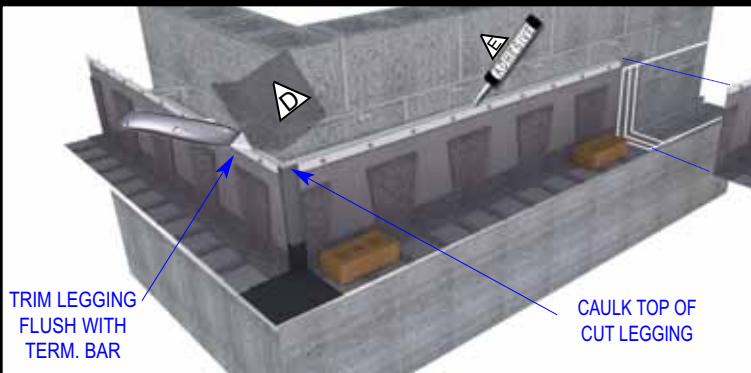
INSTALL THE FIRST SECTION AT THE LEFTMOST CORNER AND LAP SUBSEQUENT SECTIONS FROM LEFT TO RIGHT.



ADHESIVE SETS UP QUICKLY
 ALIGN TERMINATION BAR AND ALIGN AND WEIGH DOWN DRIP EDGES AS EACH PANEL IS INSTALLED. DELAYING ALIGNMENT WILL MAKE ADJUSTMENTS DIFFICULT.



4

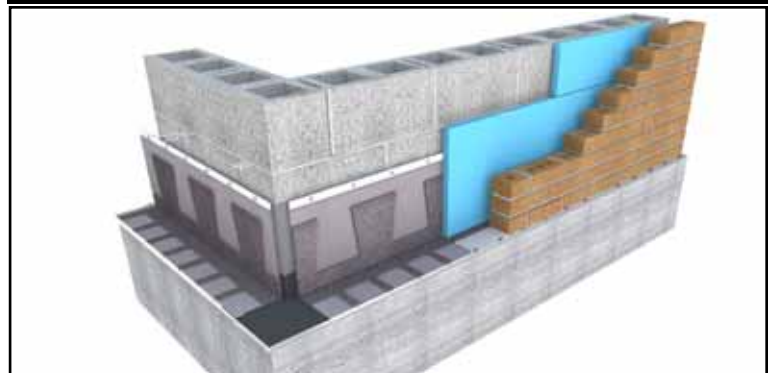
STEP FOUR



INSTALL REMAINING SECTIONS USING THE LAP SYSTEM AND SEALANT, TRIM END SECTION FLUSH WITH CORNER DRIP. TRIM PEEL & STICK LEGGING  FLUSH WITH TERMINATION BAR. CAULK TOP OF TERMINATION BAR . LOOSE BRICK UNITS CAN BE USED TO TEMPORARILY HOLD DOWN TOTALFLASH WHILE ADHESIVE CURES.

5

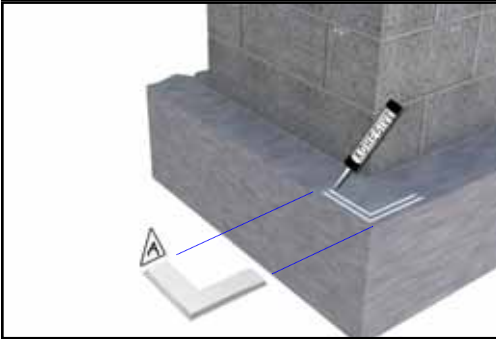
STEP FIVE



INSTALL REMAINING RIGID BOARD INSULATION OVER TOTALFLASH. LAY A MORTAR BED DIRECTLY ATOP THE TOTALFLASH WEEP TABS AND INSTALL THE BRICK VENEER. FOR PROPER DRAINAGE, ENSURE THE TIPS OF THE WEEP TABS ARE EXPOSED WHEN TOOLING THE FIRST MORTAR JOINT.

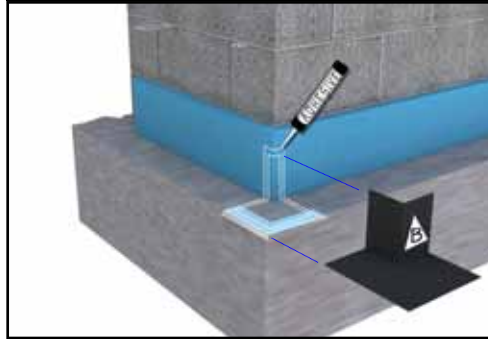
(800) 664-6638

1 STEP ONE



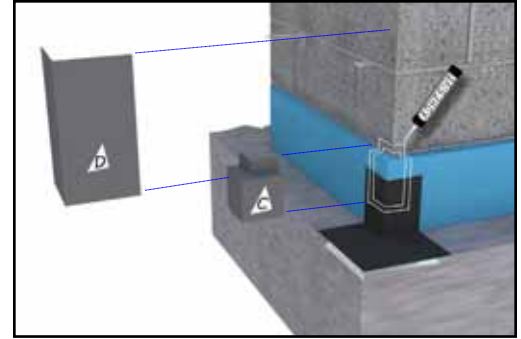
INSTALL STAINLESS STEEL CORNER **A** USING 2 BEADS OF ADHESIVE.

2 STEP TWO



INSTALL 8" HIGH SECTIONS OF RIGID INSULATION BOARD AGAINST BACKUP WALL. INSTALL PRE-FORMED CORNER BOOT **B** USING ADHESIVE.

3 STEP THREE



INSTALL THE PRE-FORMED INSULATION BOOT **A** USING ADHESIVE. (AVAILABLE IN 1", 1 1/2" AND 2" SIZES). INSTALL PEEL AND STICK LEGGING **A** ABOVE INSULATION

4 STEP FOUR

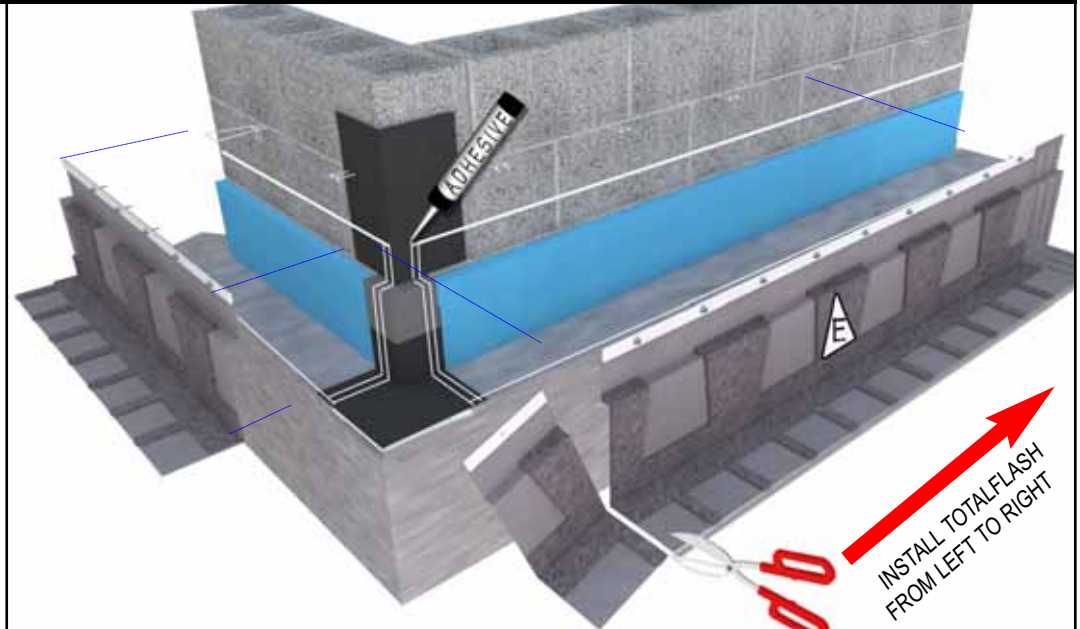
TRIM 6" LAP SECTION FROM LEFT SIDE OF FIRST SECTION OF TOTAL FLASH.

INSTALL TOTALFLASH **A** ADJACENT TO CORNER DRIP USING ADHESIVE APPLIED HORIZONTALLY BEHIND TERMINATION BAR AND DRIP EDGE AND VERTICALLY THE AT ENDS OF THE TOTALFLASH PANEL AS SHOWN TO THE RIGHT.

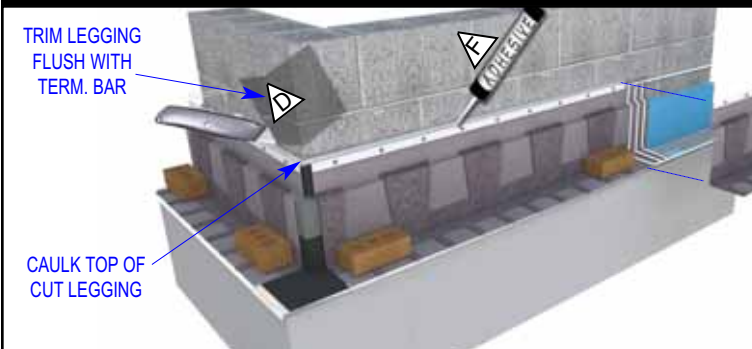
INSTALL THE FIRST SECTION AT THE LEFTMOST CORNER AND LAP SUBSEQUENT SECTIONS FROM LEFT TO RIGHT.

ADHESIVE SETS UP QUICKLY

ALIGN TERMINATION BAR AND ALIGN AND WEIGH DOWN DRIP EDGES AS EACH PANEL IS INSTALLED. DELAYING ALIGNMENT WILL MAKE ADJUSTMENTS DIFFICULT.

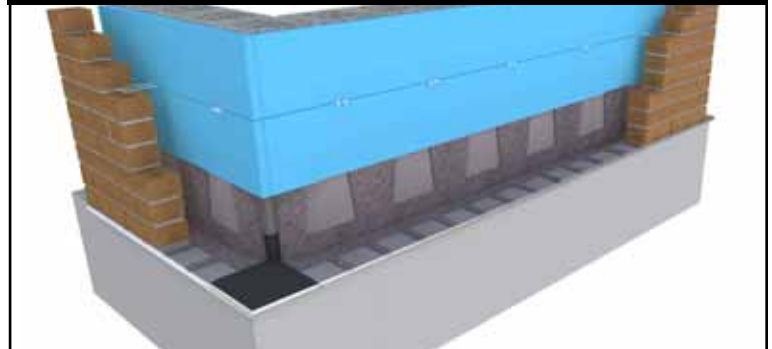


5 STEP FIVE



INSTALL REMAINING SECTIONS USING THE LAP SYSTEM AND SEALANT, TRIM END SECTION FLUSH WITH CORNER DRIP. TRIM PEEL & STICK LEGGING **A** FLUSH WITH TERMINATION BAR. CAULK TOP OF TERMINATION BAR **A**. LOOSE BRICK UNITS CAN BE USED TO TEMPORARILY HOLD DOWN TOTALFLASH WHILE ADHESIVE CURES.

6 STEP SIX



INSTALL REMAINING RIGID BOARD INSULATION ABOVE TOTALFLASH

1

STEP ONE



INSTALL PREFORMED END DAM ON BOTH ENDS OF OPENING USING ADHESIVE, TRIM TO FIT.

2

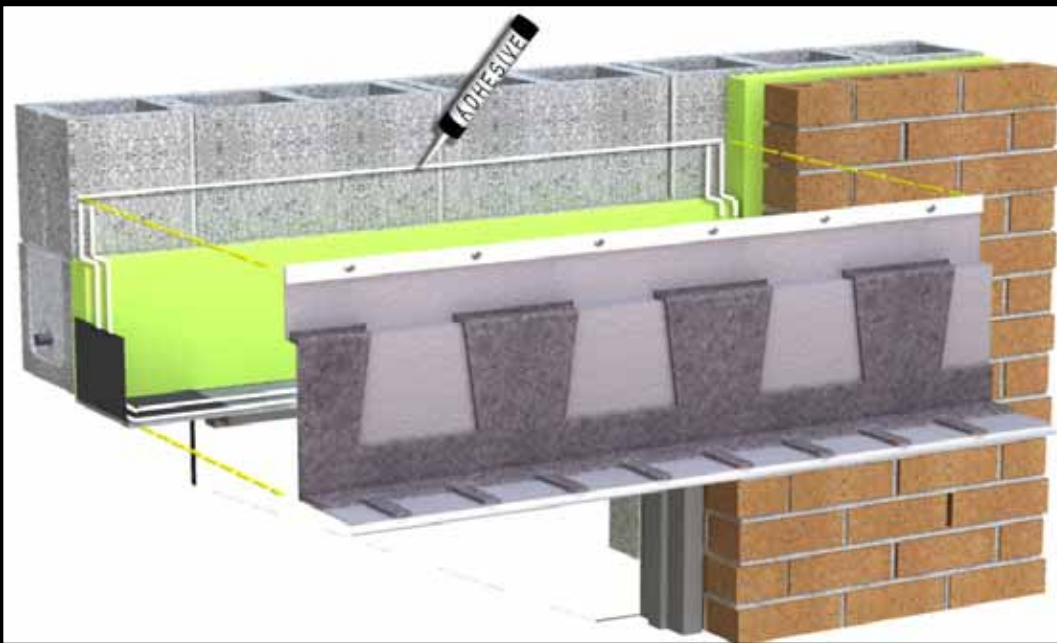
STEP TWO



INSTALL 8" HIGH SECTION OF RIGID INSULATION BOARD AGAINST THE BACKUP WALL AT LINTEL.

3

STEP THREE



INSTALL FIRST SECTION OF TOTAL FLASH ADJACENT TO END DAM USING ADHESIVE AND SCREWS. TRIM TOTALFLASH TO FIT OPENING. FOR LARGER OPENINGS, INSTALL ADDITIONAL TOTALFLASH SECTIONS USING THE INTEGRATED LAP SYSTEM, SEALANT AND SCREWS.

NOTE:

FOR EVEN FASTER INSTALLATION CONTACT MORTAR NET USA TO INQUIRE ABOUT TOTALFLASH WINDOW HEAD PANELS MADE TO THE EXACT SIZE NEEDED.

3

STEP FOUR



CAULK TOP OF TERMINATION BAR.

5

STEP FIVE



INSTALL REMAINING RIGID INSULATION AND INSTALL BRICK VENEER.

1

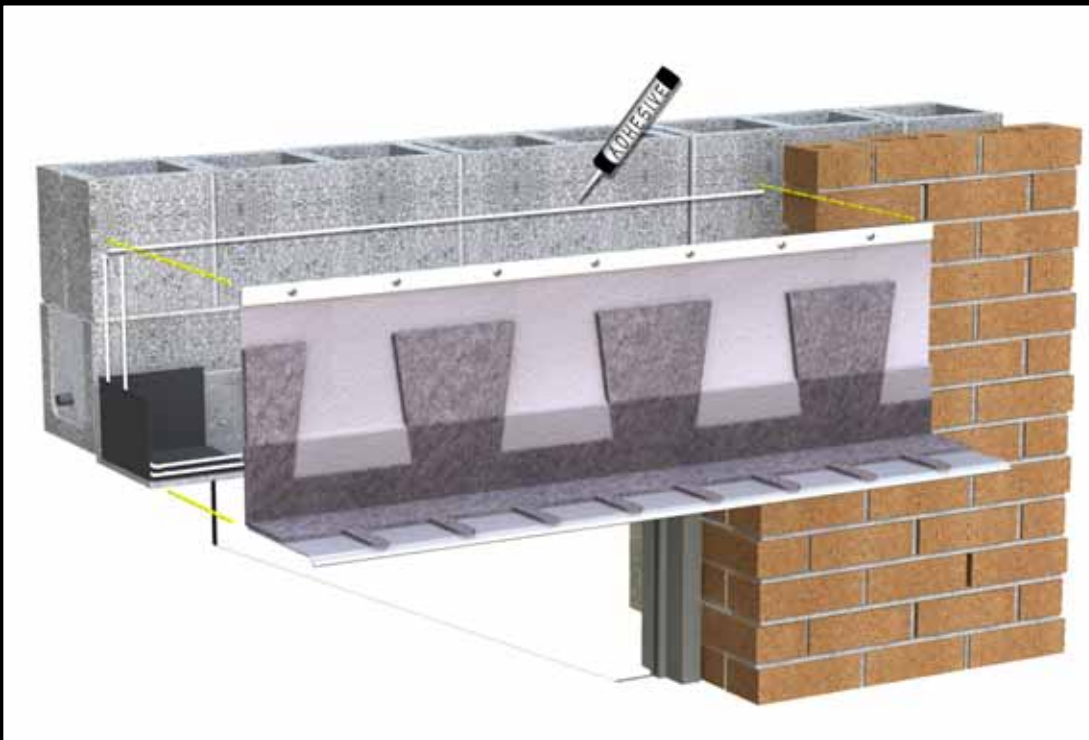
STEP ONE



INSTALL PREFORMED END DAM ON BOTH ENDS OF OPENING USING ADHESIVE, TRIM TO FIT.

2

STEP TWO



INSTALL FIRST SECTION OF TOTAL FLASH ADJACENT TO END DAM USING ADHESIVE AND SCREWS. TRIM TOTALFLASH TO FIT OPENING. FOR LARGER OPENINGS, INSTALL ADDITIONAL TOTALFLASH SECTIONS USING THE INTEGRATED LAP SYSTEM, SEALANT AND SCREWS.

NOTE:

FOR EVEN FASTER INSTALLATION CONTACT MORTAR NET USA TO INQUIRE ABOUT TOTALFLASH WINDOW HEAD PANELS MADE TO THE EXACT SIZE NEEDED.

3

STEP THREE



CAULK TOP OF TERMINATION BAR.
INSTALL RIGID INSULATION ON TOP OF TOTALFLASH.
INSTALL BRICK ABOVE LINTEL.